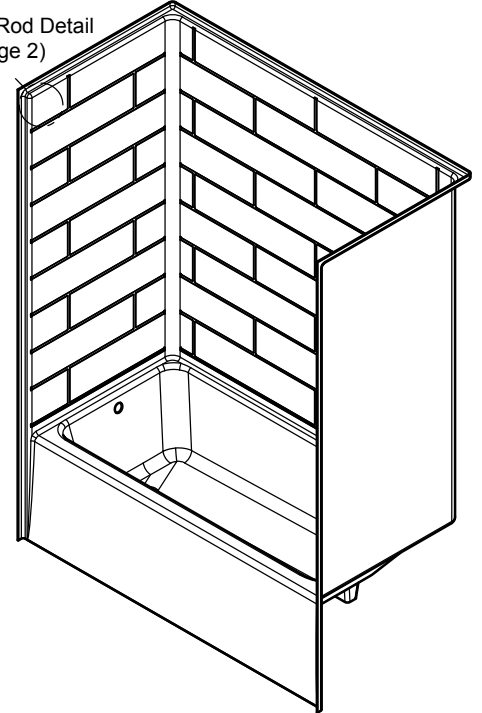


Project Name		Customer Name	
Quote Number		Date	
Customization			

## Standard Features

Type	One-piece ADA ready tub-shower stall with above floor plumbing and simulated 6"x24" tiles
Color	White
Exterior Dimensions	60"W x 31"D x 78"H
Materials	Gel coat and fiberglass composite
Approximate Weight	135 lbs

Curtain Rod Detail  
(See Page 2)



## Certifications and Accessibility Code Compliance



Universal  
Plumbing  
Code



CSA B45.5-11 / IAPMO  
Z124-2017



ADA



HUD / FHA



California  
Title 24

**ANSI**

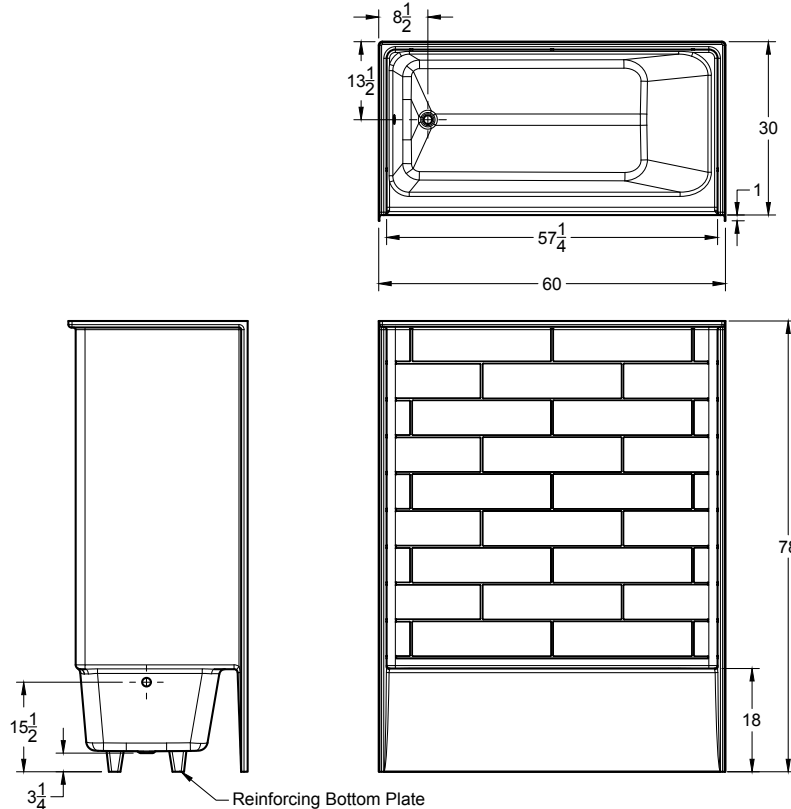
ICC A117.1  
- 2017 ANSI  
Type A

## Warranty

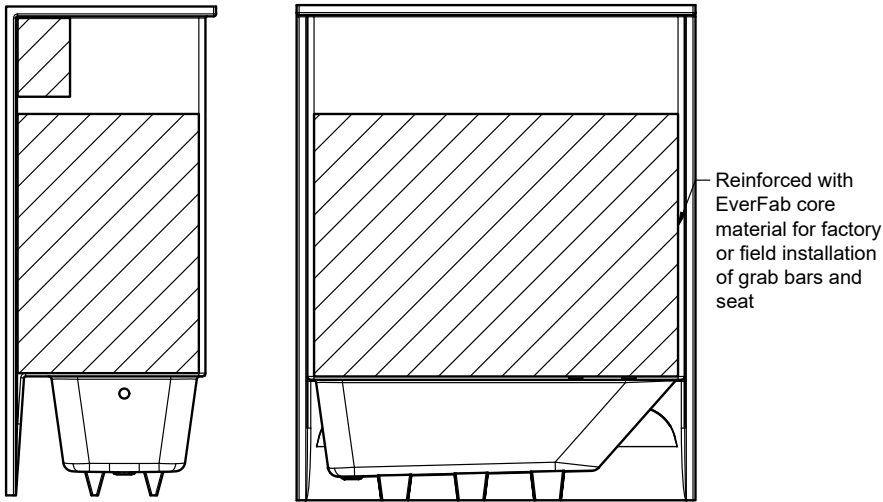
30 Year Limited

## Reinforcement

Fully reinforced with EverFab's unique composite core material which allows for factory or field installation of ADA compliant grab bars and seat



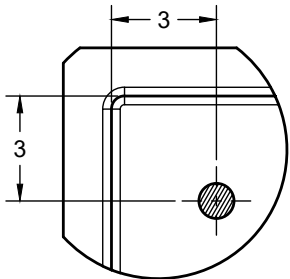
Reinforcement Locations



Architectural Specifications

- A. Shower Stall:
1. Model: No. TS6030T624A0
  2. Description: One-piece tub-shower stall with reinforcing bottom plate, slip-resistant floor, 6"x24" simulated tile, and inorganic composite reinforcement for field installation of grab bars and seat
  3. Exterior dimensions: 60 inches wide x 31 inches deep x 78 inches high
  4. Rough-in: +1/8" -0" nominal dimensions
  5. Optional Accessories: Furnish with [curtain rod], [shower curtain], [recessed soap dish], [composite corner shelf], [shower slide-bar kit], [EverFab tub-wrap], [shower drain]. If applicable, please indicate location of additional accessories on drawing
  6. Accessory Style: [Standard Thru-Bolted], [Flanged], [Elite Series], [Anti-Ligature], [Custom]
  7. Accessory Finish: [Standard Satin Stainless], [Matte Black], [Polished Stainless] [White], [Custom]

Additional Details



Standard Curtain Rod Location

Model Number	(3) Pre-Installed 1-1/4" Horizontal Grab Bars	Pre-Installed 1-1/4" Vertical Grab Bar	Pre-Installed Folding Seat	Accessibility Code Compliance
<input type="checkbox"/> TS6030T624A0	No	No	No	Adaptable**

\*\*Model is reinforced and capable of meeting accessibility code requirements with proper field-installation of grab bars and seat

Drain Placement (indicated by ‘-L’ or ‘-R’ following model number)

☐ Left Hand
 ☐ Right Hand

Optional Accessories†

<input type="checkbox"/> Curtain Rod	<input type="checkbox"/> Shower Drain
<input type="checkbox"/> Shower Curtain	<input type="checkbox"/> Custom grab bar, please specify:
<input type="checkbox"/> Recessed Soap Dish	<input type="checkbox"/> Folding seat
<input type="checkbox"/> Composite Corner Shelf	
<input type="checkbox"/> Shower Slide-Bar Kit	
<input type="checkbox"/> EverFab Tub-Wrap	

Accessory Style

☐ Thu-bolted (Standard)
 ☐ Flanged
 ☐ Elite Series
 ☐ Anti-ligature
 ☐ Custom, please specify:

Accessory Finish

☐ Satin Stainless (Standard)
 ☐ Matte Black
 ☐ Polished Stainless
 ☐ White
 ☐ Custom, please specify:

†If applicable, please select accessory style and finish from options above. If custom, please also indicate desired location(s) on drawing.