

Project Name		Customer Name	
Quote Number		Date	
Customization			

Standard Features

Type	One-piece tub-shower stall with above floor plumbing and simulated 6"x24" tiles
Color	White
Exterior Dimensions	60"W x 32"D x 74-1/2"H
Materials	Gel coat and fiberglass composite
Approximate Weight	130 lbs

Certifications and Accessibility Code Compliance



Universal
Plumbing
Code



CSA B45.5-11 / IAPMO
Z124-2017



ADA



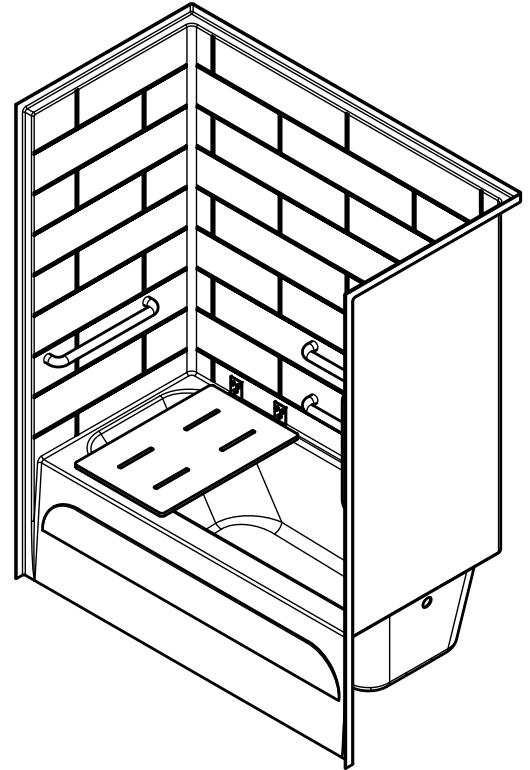
HUD / FHA



California
Title 24

ANSI

ICC A117.1
- 2017 ANSI
Type A

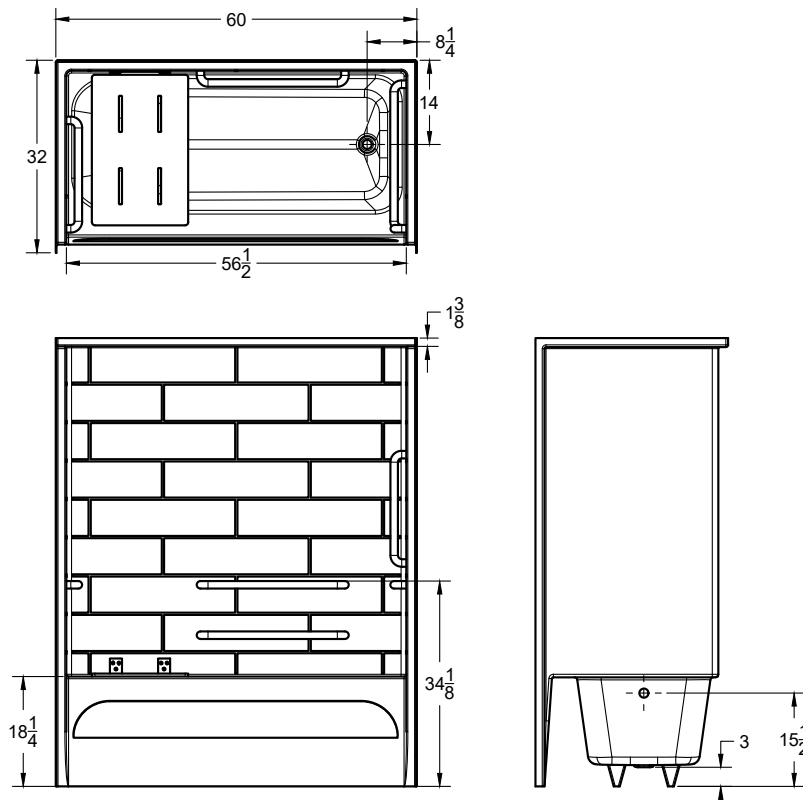


Warranty

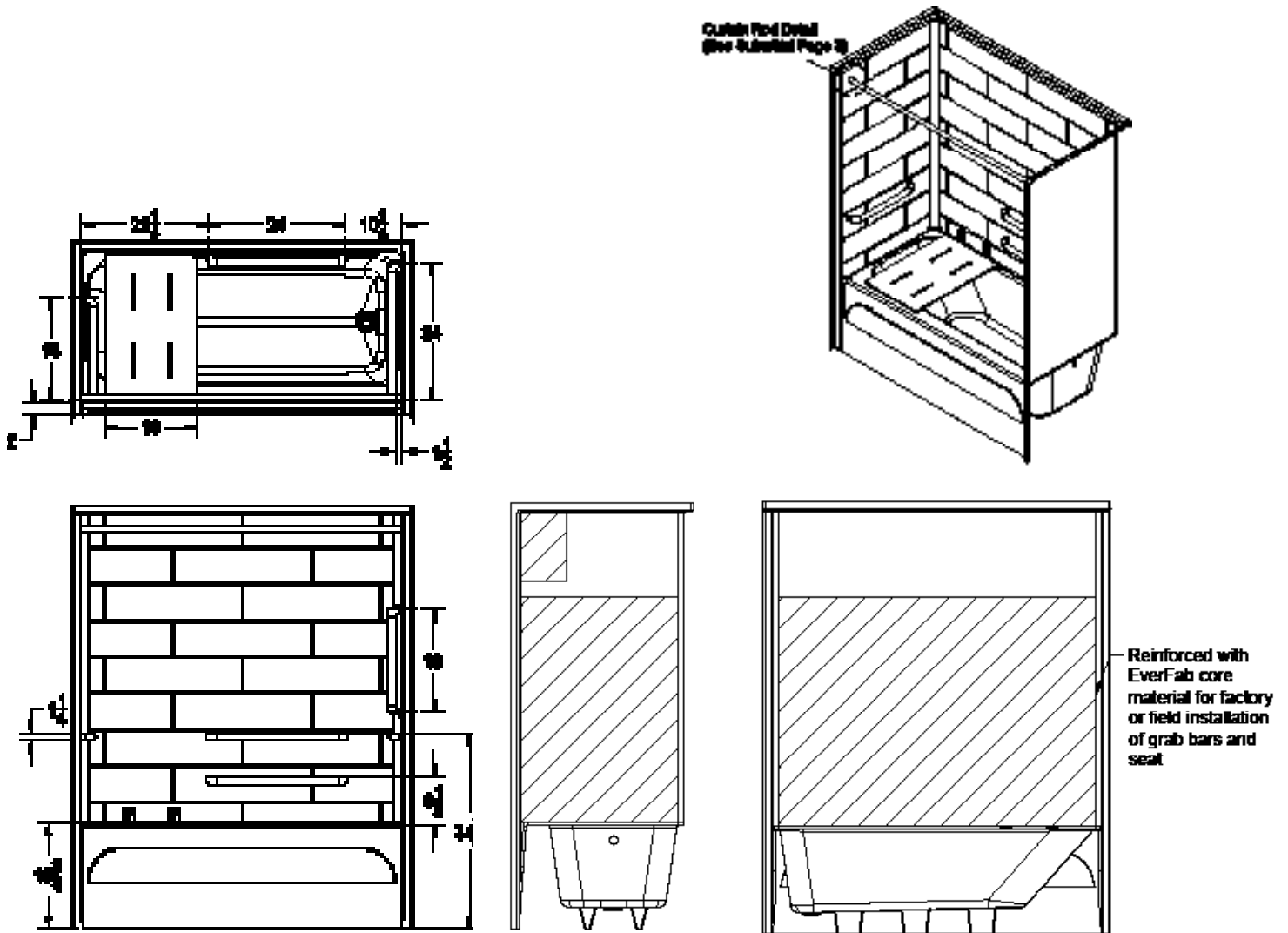
30 Year Limited

Reinforcement

Fully reinforced with EverFab's unique composite core material which allows for factory or field installation of ADA compliant grab bars and seat



ADA Accessory Dimensions

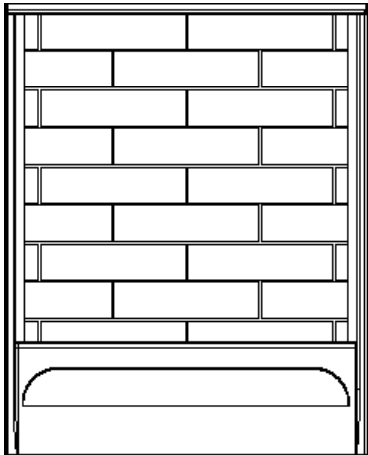


Architectural Specifications

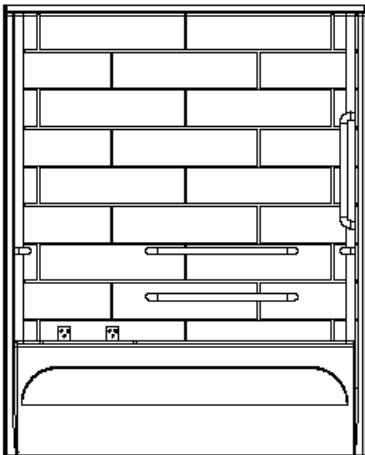
A. Shower Stall:

1. Model: No. TS6032T624A
2. Description: One-piece tub-shower stall with reinforcing bottom plate, slip-resistant floor, 6"x24" simulated tile, and inorganic composite reinforcement for placement of grab bars and seat
3. Exterior dimensions: 60 inches wide x 32 inches deep x 74-1/2 inches high
4. Rough-in: +1/8" -0" nominal dimensions
5. Optional Accessories: Furnish with [curtain rod], [shower curtain], [recessed soap dish], [composite corner shelf], [shower slide-bar kit], [EverFab tub-wrap], [shower drain], [18" grab bar], [24" grab bar], [folding seat]. If applicable, please indicate location of additional accessories on drawing
6. Accessory Style: [A0 - No Accessories], [Standard Thru-Bolted], [Flanged], [Elite Series], [Anti-Ligature], [Custom]
7. Accessory Finish: [A0 - No Accessories], [Standard Satin Stainless], [Matte Black], [Polished Stainless] [White], [Custom]

ADA Accessory Configurations (number following 'A' indicates configuration)

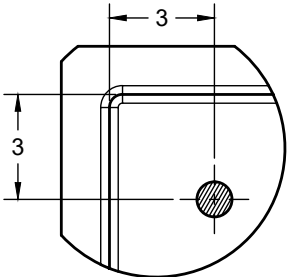


TS6032T624A0-R
No Accessories



TS6032T624A1-R
[4] 18-24" horizontal grab bars
Seat
18" vertical grab bar

Additional Details



Standard Curtain Rod Location

Standard Threshold Models

Model Number	(3) Pre-Installed 1-1/4" Horizontal Grab Bars	Pre-Installed 1-1/4" Vertical Grab Bar	Pre-Installed Folding Seat	Accessibility Code Compliance
<input type="checkbox"/> TS6032T624A0	No	No	No	Adaptable**
<input type="checkbox"/> TS6032T624A1	Yes	Yes	Yes	ADA, HUD/FHA, ANSI, CA Title 24

**Model is reinforced and capable of meeting accessibility code requirements with proper field-installation of grab bars and seat

Drain Placement (indicated by ‘-L’ or ‘-R’ following model number)*

☐ Left Hand

☐ Right Hand

*Drain placement is determined as if outside the unit looking in. For clarity, a right hand model is shown in all drawings.

Optional Accessories†

☐ Curtain Rod

☐ Shower Curtain

☐ Recessed Soap Dish

☐ Composite Corner Shelf

☐ Shower Slide-Bar Kit

☐ EverFab Tub-Wrap

☐ Shower Drain

☐ 18" grab bar

☐ 24" grab bar

☐ Custom grab bar, please specify:

☐ Folding seat

Accessory Style

☐ Thu-bolted (Standard)

☐ Flanged

☐ Elite Series

☐ Anti-ligature

☐ Custom, please specify:

Accessory Finish

☐ Satin Stainless (Standard)

☐ Matte Black

☐ Polished Stainless

☐ White

☐ Custom, please specify:

†If applicable, please select accessory style and finish from options above. If custom, please also indicate desired location(s) on drawing.