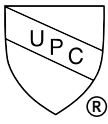


Project Name		Customer Name	
Quote Number		Date	
Customization			

## Standard Features

<b>Type</b>	One-piece tub-shower stall with above floor plumbing and simulated 6"x24" tiles
<b>Color</b>	White
<b>Exterior Dimensions</b>	60"W x 32"D x 74-1/2"H
<b>Materials</b>	Gel coat and fiberglass composite
<b>Approximate Weight</b>	130 lbs

## Certifications and Accessibility Code Compliance



Universal Plumbing Code



CSA B45.5-11 / IAPMO Z124-2017



ADA



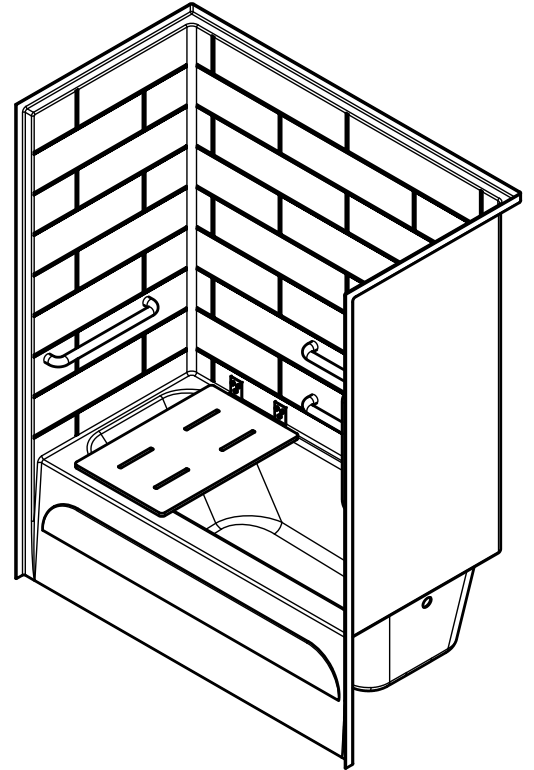
HUD / FHA



California Title 24

**ANSI**

ICC A117.1 - 2017 ANSI Type A

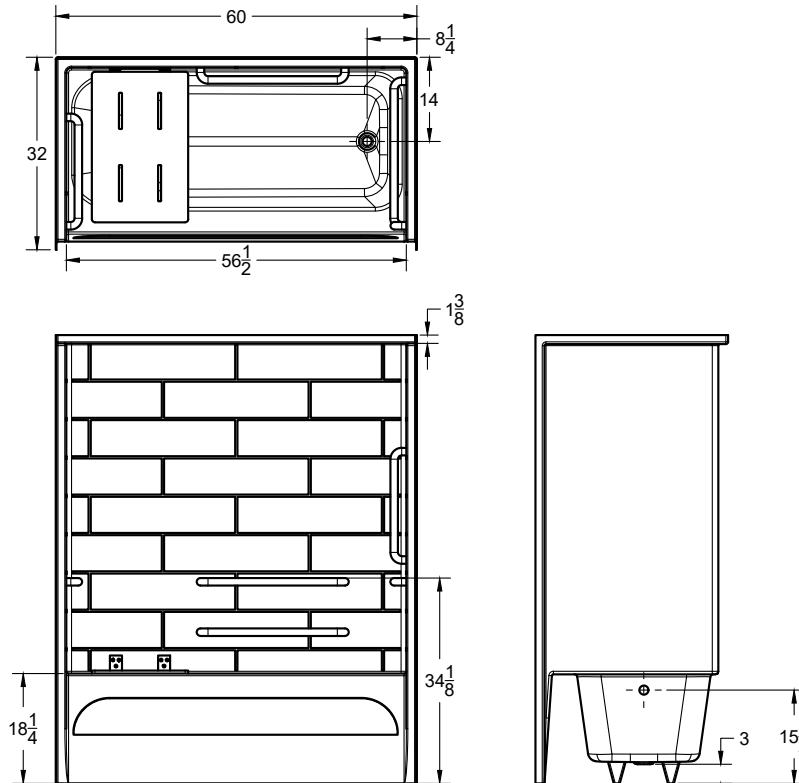


## Warranty

30 Year Limited

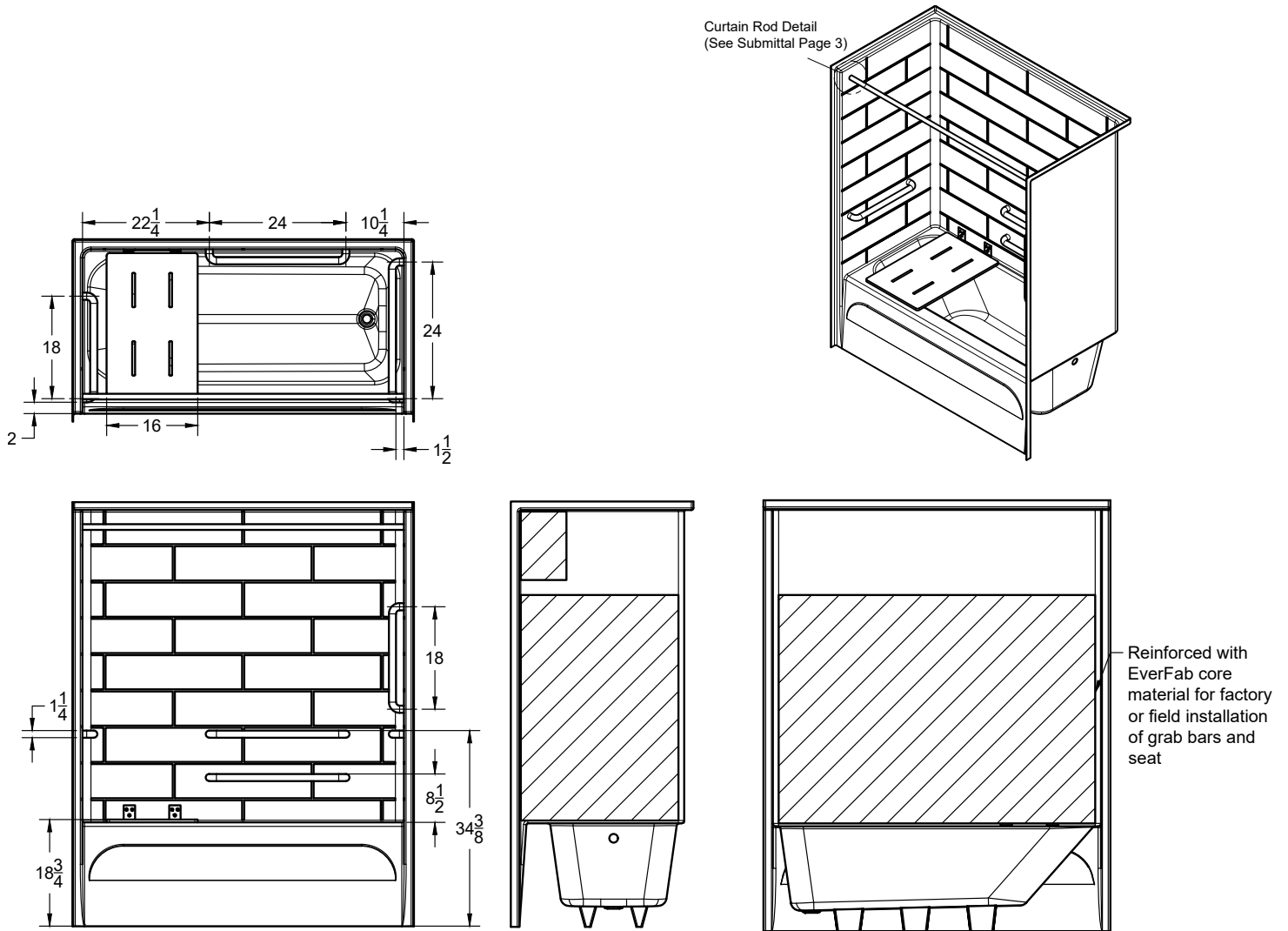
## Reinforcement

Fully reinforced with EverFab's unique composite core material which allows for factory or field installation of ADA compliant grab bars and seat



Due to the nature of the material, all measurements may vary by  $\pm 3/8"$ .  
 Dimensions needed for site preparation should be measured from the unit.

## ADA Accessory Dimensions

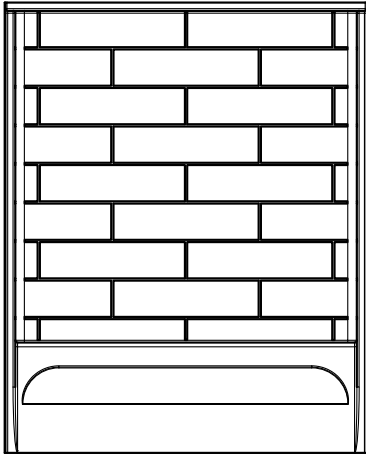


## Architectural Specifications

### A. Shower Stall:

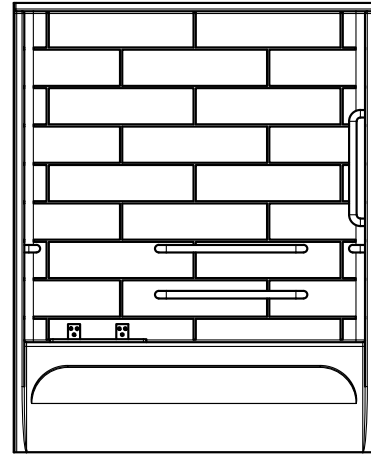
1. Model: No. TS6032T624A
2. Description: One-piece tub-shower stall with reinforcing bottom plate, slip-resistant floor, 6"x24" simulated tile, and inorganic composite reinforcement for placement of grab bars and seat
3. Exterior dimensions: 60 inches wide x 32 inches deep x 74-1/2 inches high
4. Rough-in: +1/8" -0" nominal dimensions
5. Optional Accessories: Furnish with [curtain rod], [shower curtain], [recessed soap dish], [composite corner shelf], [shower slide-bar kit], [EverFab tub-wrap], [shower drain], [18" grab bar], [24" grab bar], [folding seat]. If applicable, please indicate location of additional accessories on drawing
6. Accessory Style: [A0 - No Accessories], [Standard Thru-Bolted], [Flanged], [Elite Series], [Anti-Ligature], [Custom]
7. Accessory Finish: [A0 - No Accessories], [Standard Satin Stainless], [Matte Black], [Polished Stainless] [White], [Custom]

#### ADA Accessory Configurations (number following 'A' indicates configuration)



**TS6032T624A0-R**

No Accessories



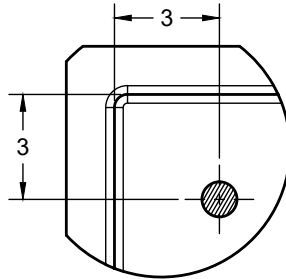
**TS6032T624A1-R**

[4] 18-24" horizontal grab bars

Seat

18" vertical grab bar

#### Additional Details



Standard Curtain Rod Location

### Standard Threshold Models

Model Number	Pre-Installed 1-1/4" Horizontal Grab Bars	Pre-Installed 1-1/4" Vertical Grab Bar	Pre-Installed Folding Seat	Accessibility Code Compliance
<input type="checkbox"/> TS6032T624A0	No	No	No	Adaptable**
<input type="checkbox"/> TS6032T624A1	Yes	Yes	Yes	ADA, HUD/FHA, ANSI, CA Title 24

*\*\*Model is reinforced and capable of meeting accessibility code requirements with proper field-installation of grab bars and seat*

### Drain Placement (indicated by '-L' or '-R' following model number)\*

- Left Hand  Right Hand

*\*Drain placement is determined as if outside the unit looking in. For clarity, a right hand model is shown in all drawings.*

### Optional Accessories†

- |   |   |
|---|---|
| <input type="checkbox"/> Curtain Rod            | <input type="checkbox"/> Shower Drain                     |
| <input type="checkbox"/> Shower Curtain         | <input type="checkbox"/> 18" grab bar                     |
| <input type="checkbox"/> Recessed Soap Dish     | <input type="checkbox"/> 24" grab bar                     |
| <input type="checkbox"/> Composite Corner Shelf | <input type="checkbox"/> Custom grab bar, please specify: |
| <input type="checkbox"/> Shower Slide-Bar Kit   | <input type="checkbox"/> Folding seat                     |
| <input type="checkbox"/> EverFab Tub-Wrap       |   |

### Accessory Style

- Thu-bolted (Standard)  
 Flanged  
 Elite Series  
 Anti-ligature  
 Custom, please specify:

### Accessory Finish

- Satin Stainless (Standard)  
 Matte Black  
 Polished Stainless  
 White  
 Custom, please specify:

*†If applicable, please select accessory style and finish from options above. If custom, please also indicate desired location(s) on drawing.*