

Project Name		Customer Name	
Quote Number		Date	
Customization			

Standard Features

Type	Single-piece shower base available in left, right, or center drain configurations.
Color	White
Exterior Dimensions	60"W x 32"D x 7"H
Materials	Gel coat and fiberglass composite
Approximate Weight	40 lbs

Certifications and Accessibility Code Compliance



ANSI

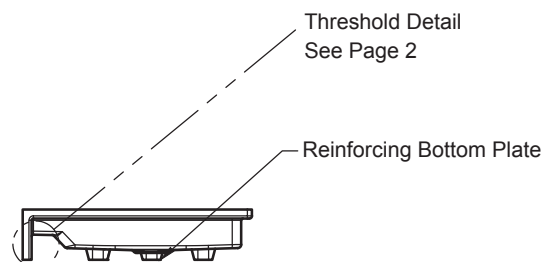
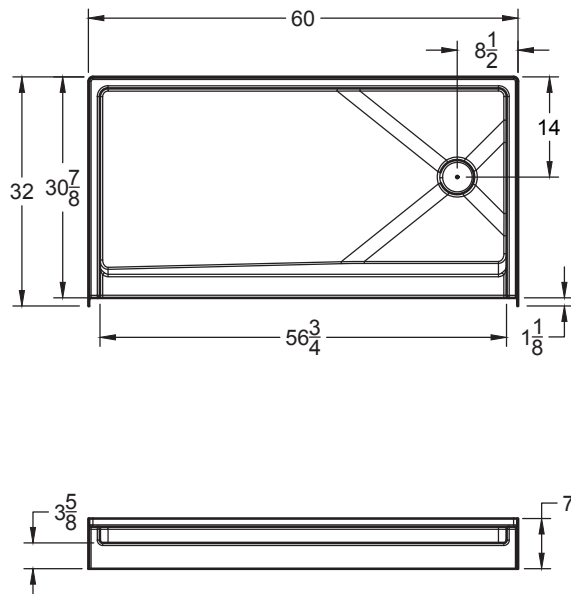
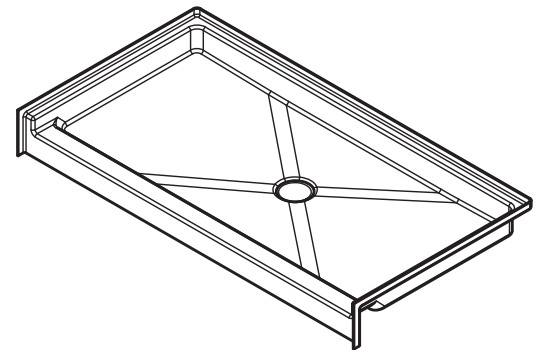
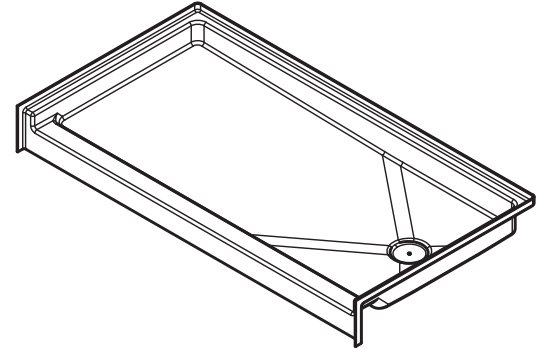
Universal
Plumbing
Code

CSA B45.5-11 / IAPMO
Z124-2017

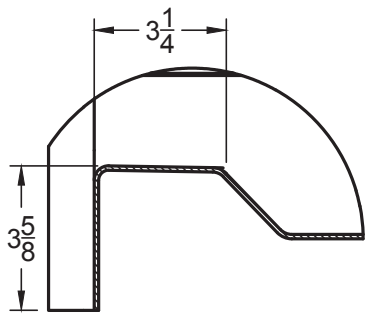
ICC A117.1 - 2017
ANSI Type B

Warranty

30 Year Limited



Detailed Views



Threshold

Architectural Specifications

- A. Shower Stall:
1.

Model: No. SP6032B-L/R
2.

Description: Single-piece shower base with reinforcing bottom plate with [left], [right], [center drain] configuration.
3.

Exterior dimensions: 60 inches wide x 32 inches deep x 7 inches high
4.

Rough-in: +1/8" -0" nominal dimensions
5.

Optional Accessories: Furnish with [EverFab tub-wrap], [shower drain].
6.

Accessory Finish: [Standard Satin Stainless], [Matte Black], [Polished Stainless] [White], [Custom]

Drain Placement*

- ☐ Left - Model SP6032B-L
- ☐ Right - Model SP6032B-R
- ☐ Center - Model SP6032B

**Drain placement is determined as if outside the unit looking in. For clarity, a right hand model is shown in the primary drawing.*

Optional Accessories†

- ☐ EverFab Tub-Wrap
- ☐ Shower Drain
-
-
-
-

Accessory Finish

- ☐ Satin Stainless (Standard)
- ☐ Matte Black
- ☐ Polished Stainless
- ☐ White
- ☐ Custom, please specify:

†If applicable, please select accessory style and finish from options above. If custom, please also indicate desired location(s) on drawing.