

Project Name		Customer Name	
Quote Number		Date	
Customization			

## Standard Features

Type	One-piece roll-in type shower pan.
Color	Available in white or biscuit
Exterior Dimensions	63"W x 41-5/8"D x 6-3/8"H
Materials	Gel coat and fiberglass composite
Approximate Weight	60 lbs

## Certifications and Accessibility Code Compliance



Universal  
Plumbing  
Code



CSA B45.5-11 / IAPMO  
Z124-2017



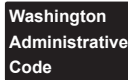
ADA

**ANSI**

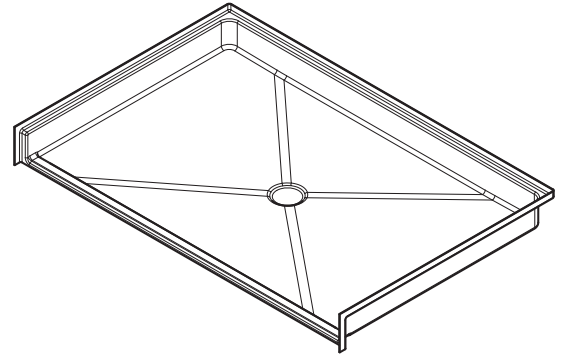
ICC A117.1  
- 2017 ANSI  
Type A



California  
Title 24

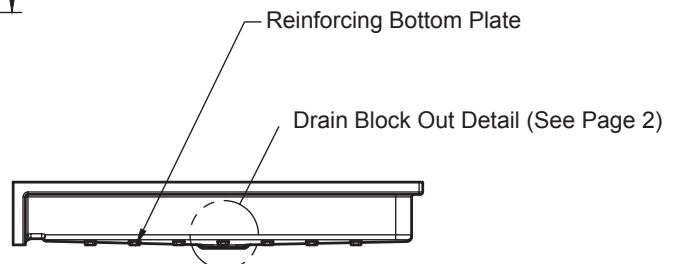
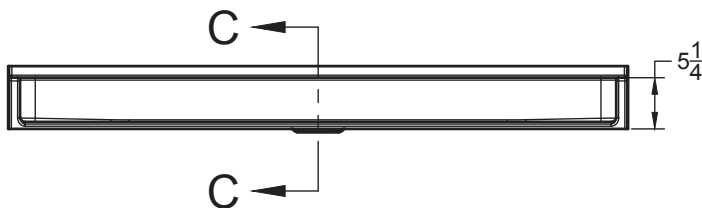
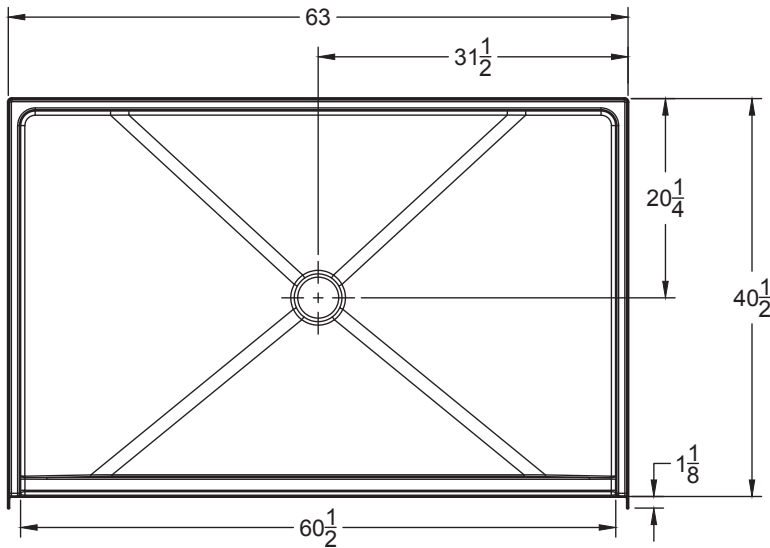


WAC 388-  
78A-3030

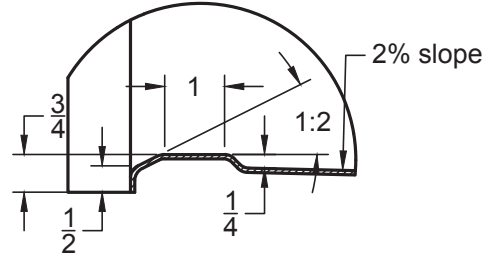


## Warranty

30 Year Limited



## Standard Threshold Detail (Section C-C)

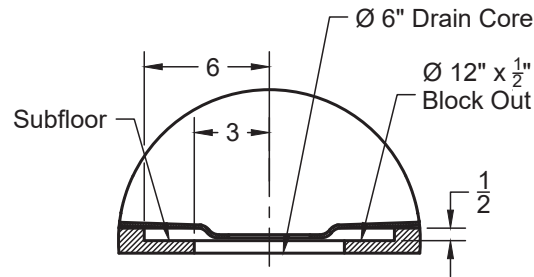


**No-Recess**

*Model number followed with 'NR'*

**Available in other threshold heights upon request**

## Drain Block-Out Detail



**Drain Block-Out**

## Architectural Specifications

### A. Shower Stall:

1. Model: No. SP6342A
2. Description: One-piece roll-in type shower pan
3. Exterior dimensions: 63 inches wide x 41-5/8" inches deep x 6-3/8 inches high
4. Rough-in: +1/8" -0" nominal dimensions
5. Threshold: No Recess Threshold Detail
6. Optional Accessories: Furnish with [EverFab tub-wrap], [shower drain], [18" field-installed grab bar], [24" field-installed grab bar], [folding seat], [T-shaped EverDam]. If applicable, please indicate location of additional accessories on drawing
7. Accessory Style: [A0 - No Accessories], [Flanged]
8. Accessory Finish: [A0 - No Accessories], [Standard Satin Stainless], [Matte Black], [Polished Stainless] [White], [Custom]

No-Recess Threshold

Model Number		Drain Block Out Required	Accessibility Code Compliance
<input type="checkbox"/>	SP6342A0NR	Yes	Adaptable**

\*\*Shower floor is reinforced and capable of meeting accessibility code requirements for size and floor strength with proper field-installation of grab bars and seat

Color

White	Biscuit (Model Number Followed by “ -B ”)
<input type="checkbox"/>	<input type="checkbox"/>

Optional Accessories†

<input type="checkbox"/> Shower Drain	
<input type="checkbox"/> 18” grab bar	
<input type="checkbox"/> 24” grab bar	
<input type="checkbox"/> T-shaped EverDam	
<input type="checkbox"/> EverFab Tub-Wrap	

Accessory Style	Accessory Finish
<input type="checkbox"/> Flanged	<input type="checkbox"/> Satin Stainless (Standard)
<input type="checkbox"/> Elite Series	<input type="checkbox"/> Matte Black
<input type="checkbox"/> Anti-ligature	<input type="checkbox"/> Polished Stainless
<input type="checkbox"/> Custom, please specify:	<input type="checkbox"/> White
	<input type="checkbox"/> Custom, please specify:

†If applicable, please select accessory style and finish from options above. If custom, please also indicate desired location(s) on drawing.